

An examination of large-scale electronic health records implementation in Primary Healthcare Centers in Saudi Arabia: a qualitative study

This study concluded that the main causes that lead to the failure of the large-scale project were lack of connectivity, lack of technical support, and staff changes, particularly those who occupied high-level positions in the Saudi ministry of Health. The success rate of EHRs implementation can be directly impacted by the size of the project.

*Alzghaibi HA. *Frontiers in public health*. 2023; 11: 1121327.

1



Scan or Click

Use of simulation models when developing and testing hospital evacuation plans: a tool for improving emergency preparedness

The aim of this study was to use a simulation model to illustrate how it can aid emergency planners in the development, testing, and revising of hospitals evacuation plans. This study includes evacuation exercises at two emergency hospitals in Region Stockholm, Sweden

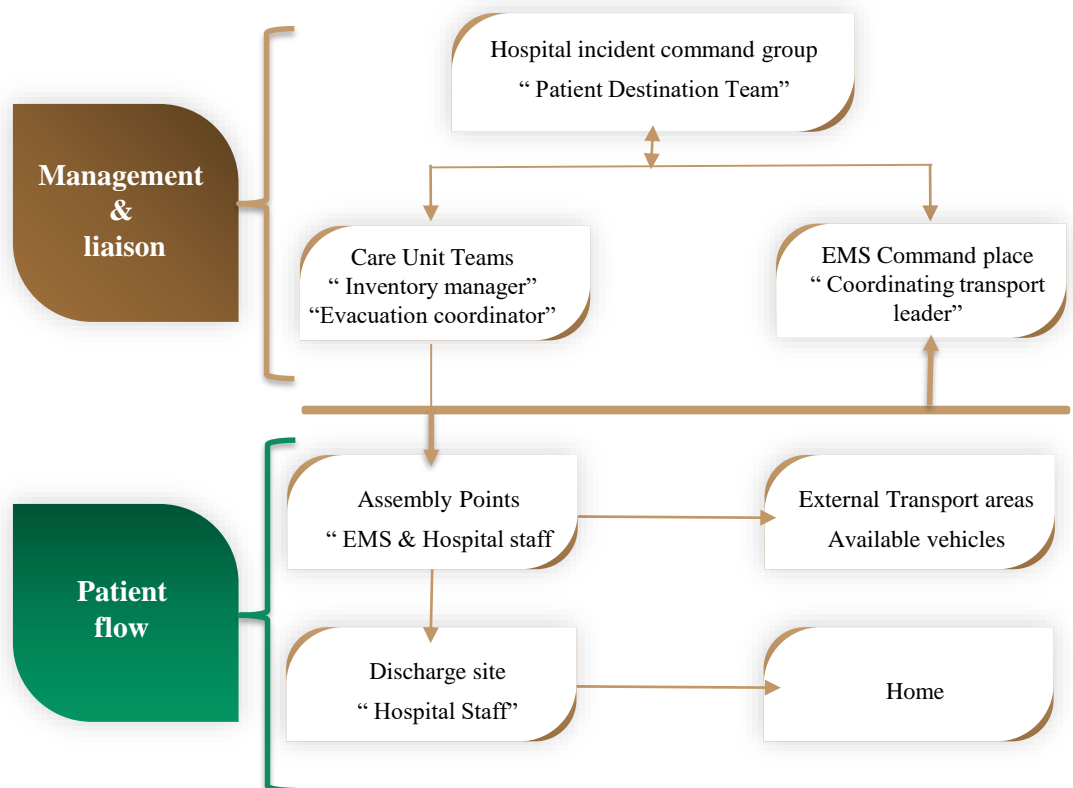
*Rådestad M. et al. *Scandinavian journal of trauma, resuscitation and emergency medicine*. 2023;31(1):43.

2



Scan or Click

Overview of the hospital evacuation process



3



Scan or Click

Artificial Intelligence-
Based Consumer Health
Informatics
Application: Scoping
Review

This scoping review showed the trend in AI-based CHI systems and their impact on patient outcomes as well as patients' perceptions of these systems. Future studies should also explore how clinicians and health care professionals perceive these consumer-based systems and integrate them into the overall workflow.

* Asan O. et al . *Journal of Medical Internet research*. 2023; 25: e47260.

Type of artificial intelligence (AI)-based consumer health informatics (CHI) systems. mHealth: mobile health

AI-Based CHI System

Telemedicine

- Decision aid
- Patient education

mHealth

- Decision support
- Awareness raising
- Surveillance
- Mobile telemedicine
- Patient monitoring

Robotics

- Rehabilitation
- Assisted living device